

45m - 3.500kg

40m - 4.000kg

38m - 4.200kg

33m - 4.700kg

28m - 5.200kg

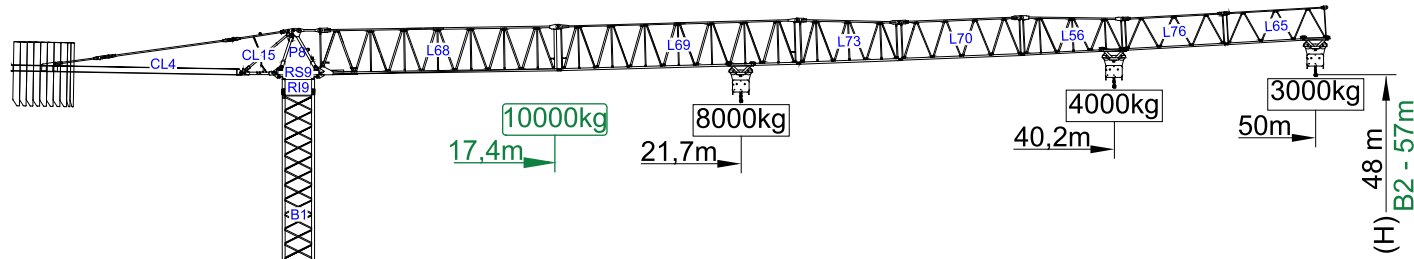
I

II

III

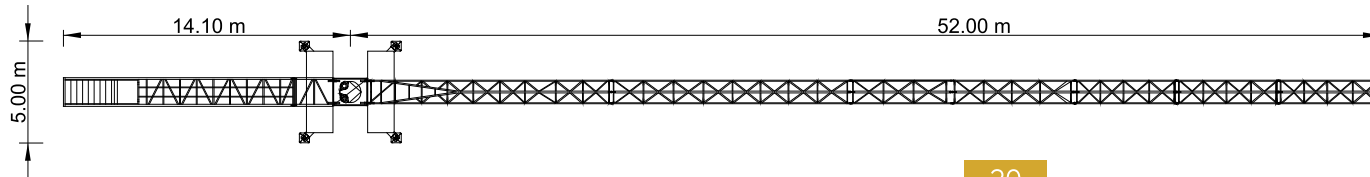
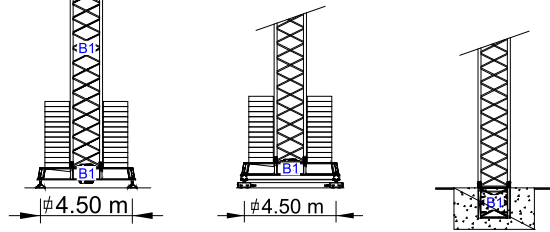
IV

V



Cargas. Loads. Lasten. Charges. Cargas. Carichi. Yüklər. ГРУЗОПОДЪЁМНОСТЬ

			Kg/m		m	18	23	28	33	38	40	45	50
			8000	4000									
18000 kg 8x2000 + 2x1000 kg	50m	L68+L69+L73+L70+L56 L76+L65		40,2 m	□	4000	4000	4000	4000	4000	3920	3410	3000
			21,7 m	□	8000	7340	5900	4900	4170	3920	3410	3000	
18000 kg 8x2000 + 2x1000 kg	45m	L68+L69+L73+L70+L56 L76		41,1 m	□	4000	4000	4000	4000	4000	4000	3500	
			22,2 m	□	8000	7510	6050	5030	4270	4020	3500		
16000 kg 8x2000	40m	L68+L69+L73+L70+L56		40 m	□	4000	4000	4000	4000	4000	4000	4000	
			22,2 m	□	8000	7470	6010	4990	4250	4000			
13000 kg 6x2000+ 1x1000 kg	38m	L68+L73+L70+L56+L76 L65		38 m	□	4000	4000	4000	4000	4000			
			22,1 m	□	8000	7450	5990	4980	4200				
12000 kg 6x2000 kg	33m	L68+L73+L70+L56+L76		33 m	□	4000	4000	4000	4000				
			21,3 m	□	8000	7100	5710	4700					
10000 kg 5x2000 kg	28m	L68+L73+L70+L56		28 m	□	4000	4000	4000					
			19,9 m	□	8000	6540	5200						








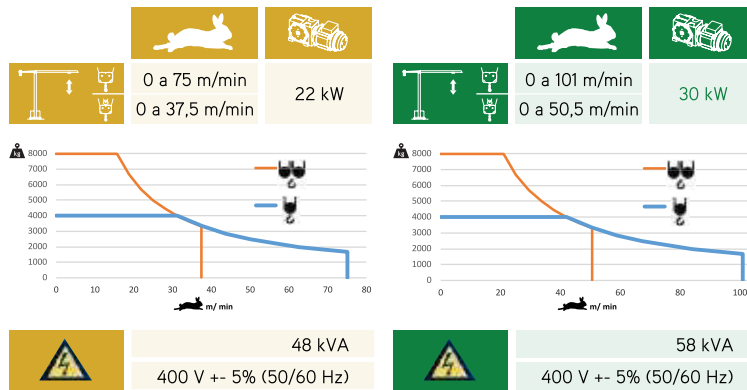
# SGT 5030TL

50m - 3.000kg

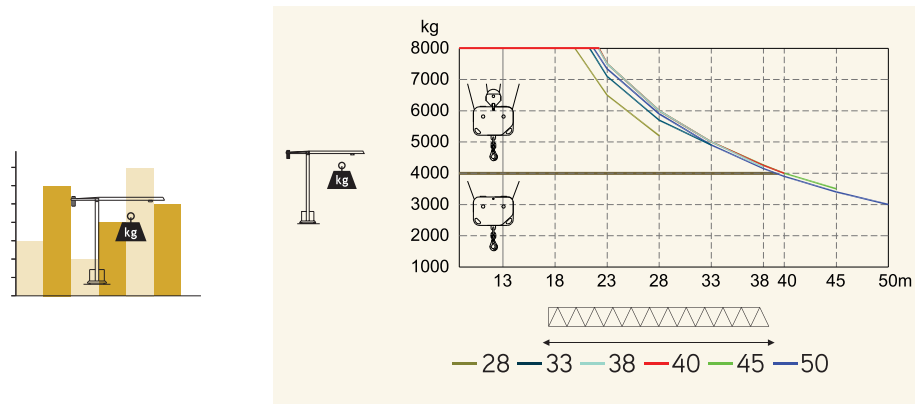
8.000Kg

Características . Characteristics . Eigenschaften  
Caractéristiques . Characteristics . Caratteristiche  
Özellikler . ХАРАКТЕРИСТИКИ


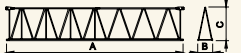



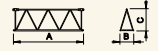
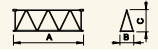
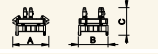
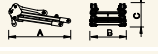

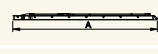
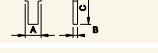
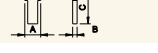


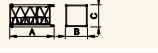
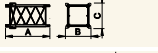
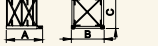
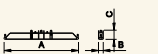
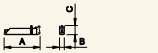
	
	0 a 1 r.p.m. 2x5 daN.m
	0 a 60 m/min 5,5 kW
	0-10 m/min 2x4 kW



Velocidade de elevação . Hoisting speed . Hubgeschwindigkeit . Vitesse d'élevation .  
Velocidad de elevación . Velocità di sollevamento . Kaldırma hızı (m/min) .  
Скорость подъема (м/мин)



Elementos . Parts . Teile . Éléments . Elementos . Elemento . Parçalar . ЭЛЕМЕНТЫ

		A (mm)	B (mm)	C (mm)	kg	Code
L68		11970	1900	2900	5050	531 50 30
L69		11960	1160	2260	1650	
L73		5230	1160	2260	750	
L70		6200	1160	1950	680	
L56		5200	1160	1930	590	
L76		5180	1160	1610	370	
L65		5110	1160	1610	330	
RS9 RI9		2505	1700	1950	4650	
P8		2230	1300	820	830	
CL15		3405	1320	445	600	
CL4		11400	1500	500	4000	
CP2		1160	330	3140	8x2000 16000	704 20 00
CP3		1160	165	3140	2x1000 2000	704 10 00
					TOTAL	37500
B1		12000	1620	1620	3450	508 12 00
B1		6130	1620	1620	1800	508 06 00
B1		3195	1620	1620	1070	508 06 01
B1		3195	1830	1830	1100	508 06 03
B1		1775	1600	1600	650	508 06 02
B1		6620	500	1040	2190	608 00 01
B1		3210	340	1040	2x980 1960	
					TOTAL	4150