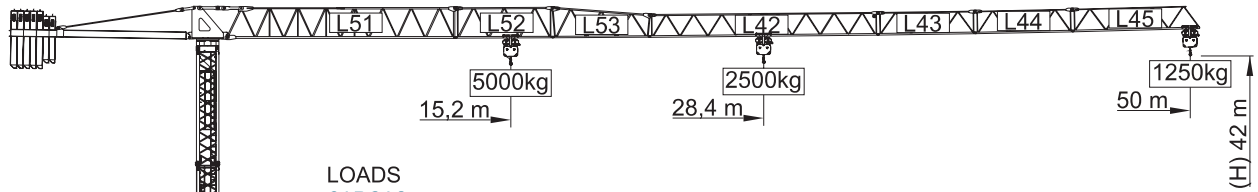
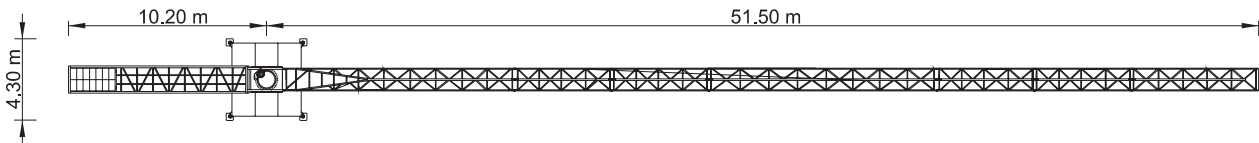
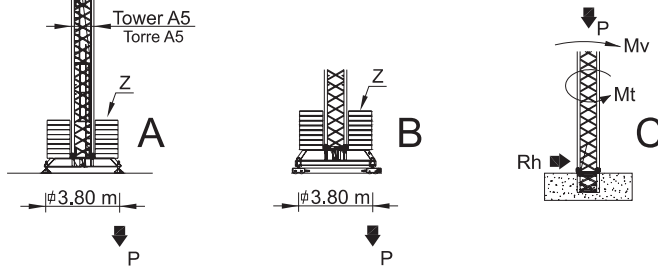


SGT 5012TL



LOADS CARGAS

Counterweight Contrapeso	Jib Length Comprimento da lança	Kg / m		m	12	15	23	28	33	40	45	50
		5000	2500									
13000kg 5x2000kg+2x1500kg	50 m L51+L52+L53+L42+L43+L44+L45	28,4 m	15,2 m	5000	2500	2500	2500	2500	2100	1600	1400	1250
11500kg 5x2000kg+1x1500kg	45 m L51+L52+L53+L42+L43+L45	29,5 m	15,8 m	5000	2500	2500	2500	2500	2200	1700	1500	
11000kg 4x2000kg+2x1500kg	40 m L51+L52+L53+L42+L45	30,3 m	16,2 m	5000	2500	2500	2500	2500	2200	1800		
9000kg 3x2000kg+2x1500kg	33 m L51+L52+L53+L43+L45	30,1 m	16,2 m	5000	2500	2500	2500	2500	2250			
7000kg 2x2000kg+2x1500kg	28 m L51+L52+L53+L45	28 m	15 m	5000	2500	2500	2500	2500				
5000kg 1x2000kg+2x1500kg	23 m L51+L53+L45	23 m	12,3 m	5000	4000	2500	2500					



REACTIONS REAÇÕES

BALLAST TABLE AND MAXIMUM REACTIONS FOR ALL JIB VERSIONS TABELA DE LASTRO E REAÇÕES MÁXIMAS PARA TODAS AS VERSÕES DE LANÇA							
H m	A / B		C				
	Z kN	P kN	Mv kNm	P kN	Rh kN	Mt kNm	
21	450	347	882	333	22	66	
24	450	354	908	342	25	66	
27	450	363	942	351	29	66	
30	450	372	982	360	32	66	
33	500	395	1026	369	35	66	
36	500	406	1075	378	38	66	
39	600	443	1127	387	41	66	
42	750	494	1185	396	45	66	

CHARACTERISTICS CARACTERÍSTICAS

Motions Movimento	Speed Velocidade	Motor's power Pot. dos motores
Hoisting Elevação	0 a 88 m/min.	15 kW
	0 a 44 m/min.	
Slewing Orientação	0 a 1 r.p.m.	2x3 daN.m
Trolleying Distribuição	0 a 60 m/min.	3 kW
Travelling Translação	15 m/min.	2x3 kW
Electric power / Potência total		30 kVA
Tension / Tensão		400 v ±5% (50 Hz)

* Option / Opção

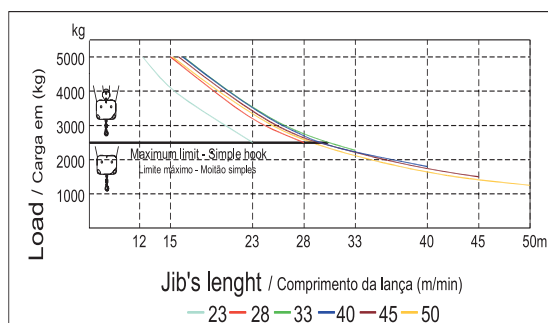
SGT 5012TL

PARTS ELEMENTOS

		A (m)	B (mm)	C (mm)	Peso (kg)	Cod.
Jib section Lana		11950	1300	2250	2900	
Jib section Lana		5200	1160	1650	535	
Jib section Lana		5200	1160	1650	510	
Jib section Lana		11820	1160	1210	820	
Jib section Lana		5100	1160	1210	260	530 50 12
Jib section Lana		5100	1160	1210	230	
Jib section Lana		6570	1300	1350	290	
Head section Cabecote		2150	1320	2320	2800	
Counter-jib Contra-lana		9350	1380	560	2000	
Ballast Contra-peso		1160	320	2530	2x1500 3000	704 15 00
		1160	330	3140	5x2000 10000	704 20 00
Total					23 345	

Tower section 12m Tramo torre 12m		11985	1160	1160	2800	530 12 00
Tower section 6m Tramo torre 6m		6075	1160	1160	1510	530 06 00
Tower section 3m Tramo torre 3m		3120	1160	1160	870	530 06 01
Telescopic section Tramo telescopagem		3090	1385	1385	890	530 06 03
Foundation tower Tramo de encastrar		1275	1160	1160	450	530 06 02
Cross shaped base Chassis		5530	500	750	1250	630 00 03
		2270	360	750	2x635 1270	
Total					2520	

LOAD DIAGRAM DIAGRAMA DE CARGAS



SPEED DIAGRAM DIAGRAMA DE VELOCIDADE

