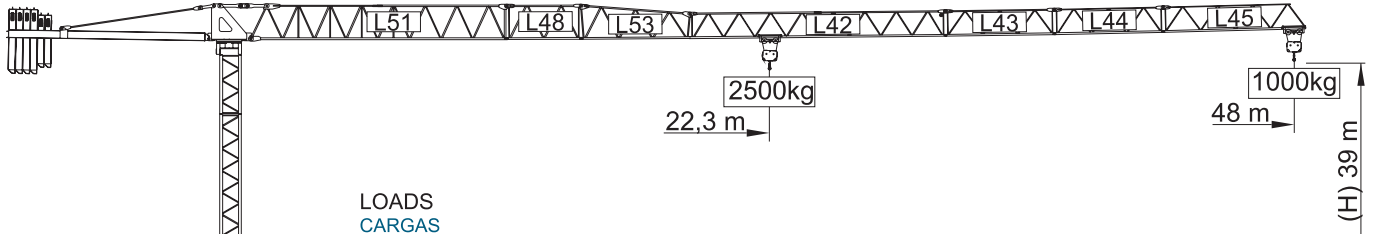
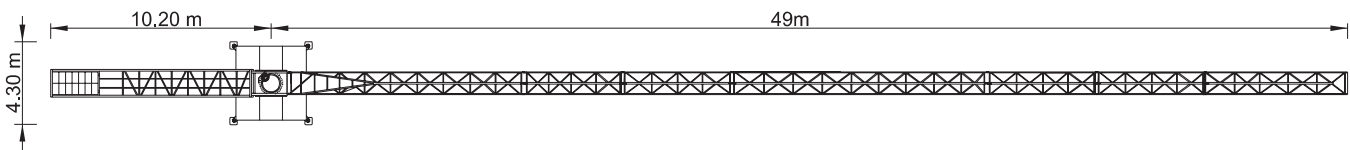
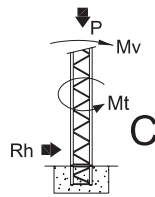
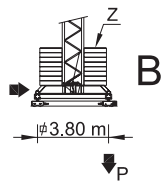
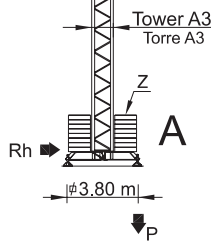


# SGT 4810TL



## LOADS CARGAS

Counterweight Contrapeso	Jib Length Comprimento da lança	Kg / m 2500 kg	m	23	26	31	35	38	43	48
				11000kg 4x2000kg+2x1500kg	48 m L51+L48+L53+L42+L43+L44+L45	22,3 m	2410	2100	1710	1480
11000kg 4x2000kg+2x1500kg	43 m L51+L48+L53+L42+L43+L45	24,6 m	2500	2350	1920	1670	1510	1300		
9500kg 4x2000kg+1x1500kg	38 m L51+L48+L53+L42+L45	25,8 m	2500	2480	2030	1760	1600			
8000kg 4x2000kg	35 m L51+L53+L42+L45	26,3 m	2500	2500	2070	1800				
8000kg 4x2000kg	31 m L51+L48+L53+L43+L45	26,7 m	2500	2500	2100					
7000kg 2x2000kg+2x1500kg	26 m L51+L48+L53+L45	25,1 m	2500	2400						
5000kg 1x2000kg+2x1500kg	23 m L51+L48+L45	23 m	2500							



## REACTIONS REAÇÕES

BALLAST TABLE AND MAXIMUM REACTIONS FOR ALL JIB VERSIONS TABELA DE LASTRO E REAÇÕES MÁXIMAS PARA TODAS AS VERSÕES DE LANÇA							
H m	A / B		C				
	Z kN	P kN	Mv kNm	P kN	Rh kN	Mt kNm	
21	450	346	927	259	22	53	
24	450	352	953	265	25	53	
27	450	359	983	270	29	53	
30	500	379	1016	275	32	53	
33	500	387	1052	281	35	53	
36	550	410	1099	288	38	53	
39	600	432	1142	293	41	53	

## CHARACTERISTICS CARACTERÍSTICAS

Motions Movimento	Speed Velocidade	Motor's power Pot. dos motores
↑↓ Hoisting Elevação	0 a 68 m/min.	11 kW
○ Slewing Orientação	0 a 1 r.p.m.	2x3 daN.m
↔ Trolleying Distribuição	0 a 50 m/min.	1,5 kW
→ Travelling* Translação	15 m/min.	2x3 kW
Electric power / Potência total		20 KVA
Tension / Tensão		400 v +- 5% (50 Hz)

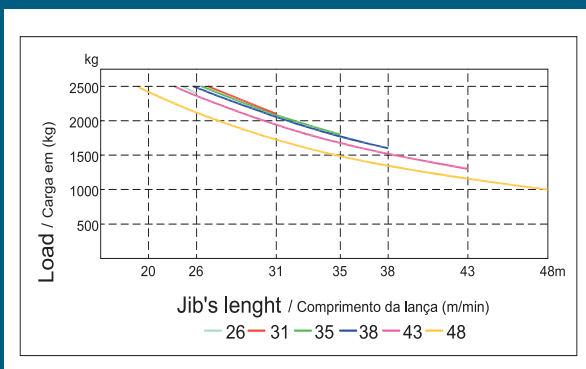
\* Option / Opção

PARTS  
ELEMENTOS

		A (mm)	B (mm)	C (mm)	Peso (kg)	Cod.
Jib section Lana		11950	1300	2250	2900	530 48 10
Jib section Lana		3190	1160	1650	350	
Jib section Lana		5200	1160	1650	510	
Jib section Lana		11820	1160	1210	820	
Jib section Lana		5100	1160	1210	260	
Jib section Lana		5100	1160	1210	230	
Jib section Lana		6800	1160	1210	290	
Head section Cabeote		2150	1320	2200	2800	
Counter-jib Contra-lana		9350	1380	560	2000	704 15 00
Ballast Contra-peso		1160	320	2530	2x1500 3000	
		1160	330	3140	4x2000 8000	704 20 00
<b>Total</b>					<b>21 160</b>	

Tower section 12m Tramo torre 12m A3		11985	1180	1180	2450	504 12 00
Tower section 6m Tramo torre 6m A3		6075	1180	1180	1300	504 06 00
Tower section 3m Tramo torre 3m A3		3120	1180	1180	720	504 06 01
Telescopic section Tramo telescopagem A3		3090	1385	1385	890	504 06 03
Foundation tower Tramo de encastrar		1200	1160	1160	350	504 06 02
Cross shaped base Chassis A3		5525	500	635	1075	604 00 01
		2670	360	635	2x535 1070	
<b>Total</b>					<b>2145</b>	

LOAD DIAGRAM  
DIAGRAMA DE CARGAS



SPEED DIAGRAM  
DIAGRAMA DE VELOCIDADE

