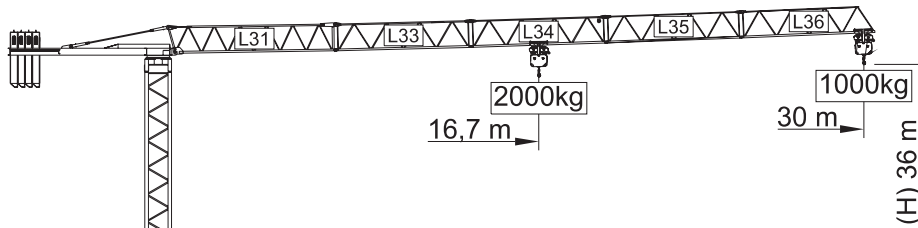
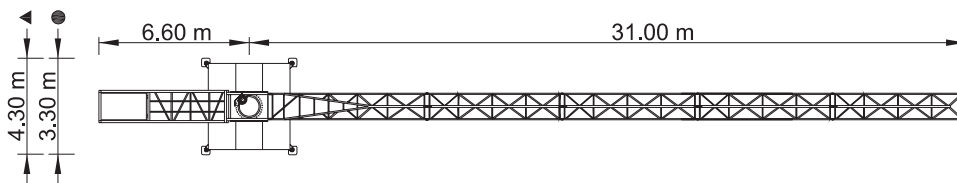
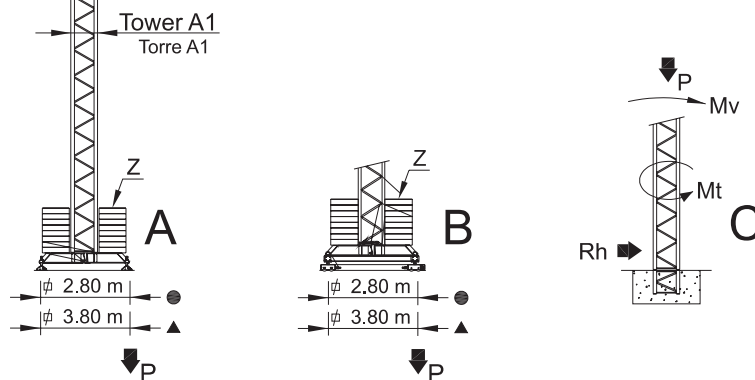


# SGT 3010TL



## LOADS CARGAS

Counterweight Contrapeso	Jib length Comprimento da lança	Kg / m 2000 kg	m			
			12	18	24	30
6000kg 4x1500kg	30 m L31+L33+L34+L35+L36	16,7 m	2000	1800	1300	1000
4500kg 3x1500kg	24 m L31+L33+L34+L36	16,5 m	2000	1800	1300	
3000kg 2x1500kg	18 m L31+L33+L36	14,8 m	2000	1600		
3000kg 2x1500kg	12 m L31+L36	12 m	2000			



## REACTIONS REAÇÕES

BALLAST TABLE AND MAXIMUM REACTIONS FOR ALL JIB VERSIONS TABELA DE LASTRO E REAÇÕES MÁXIMAS PARA TODAS AS VERSÕES DE LANÇA								
H m	A / B				C			
	Z KN	P KN	Mv kNm	P KN	Rh kN	Mt kNm		
18	400	250	265	194	512	145	16	18
21	400	250	267	196	514	150	18	18
24	400	250	269	197	517	155	21	18
27	400	250	270	198	519	160	24	18
30	400	300	272	212	522	165	26	18
33	480	350	306	234	591	170	29	18
36	600	400	370	272	721	175	32	18

## CHARACTERISTICS CARACTERÍSTICAS

Motions Movimento	Speed Velocidade	Motor's power Pot. dos motores
Hoisting Elevação	0 a 58 m/min.	9 kW
Slewing Orientação	0 a 1 r.p.m.	3 daN.m
Trolleying Distribuição	0 a 50 m/min.	1,5 kW
Travelling* Translação	15 m/min.	2x2 kW
Electric power / Potência total		15 KVA
Tension / Tensão		400 v +- 5% (50 Hz)

\* Option / Opção

PARTS  
ELEMENTOS

		A (mm)	B (mm)	C (mm)	Peso (kg)	Cod.
Jib section Lana L31		7470	800	1650	1560	503 30 10
Jib section Lana L33		6055	760	1210	350	
Jib section Lana L34		6040	760	1200	275	
Jib section Lana L35		6030	760	1190	250	
Jib section Lana L36		5900	760	1400	240	
Counter-jib Contra-lana		7380	1200	1530	2450	
Ballast Contra-peso		1160	320	2530	4x1500 6000	704 15 00

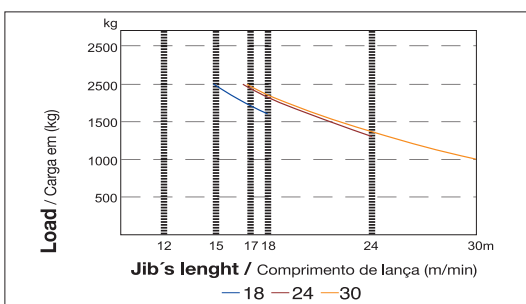
Total 11 125

Tower section 12m Tramo torre 12m A1		11985	1180	1180	1700	503 12 00
Tower section 6m Tramo torre 6m A1		6050	1180	1180	890	503 06 00
Tower section 3m Tramo torre 3m A1		3120	1180	1180	500	503 06 01
Telescopic section Tramo telescopagem A1		3090	1385	1385	890	503 06 03
Foundation tower Tramo de encastrar A1		1170	1160	1160	210	503 06 02

Cross shaped base Chassis A1		2,8	4410	400	620	410	603 00 11
			2015	230	620	2x250 500	
		Total				910	

Cross shaped base Chassis A1		3,8	5500	400	620	520	603 00 01
			2710	230	620	2x300 600	
		Total				1120	

LOAD DIAGRAM  
DIAGRAMA DE CARGAS



SPEED DIAGRAM  
DIAGRAMA DE VELOCIDADE

