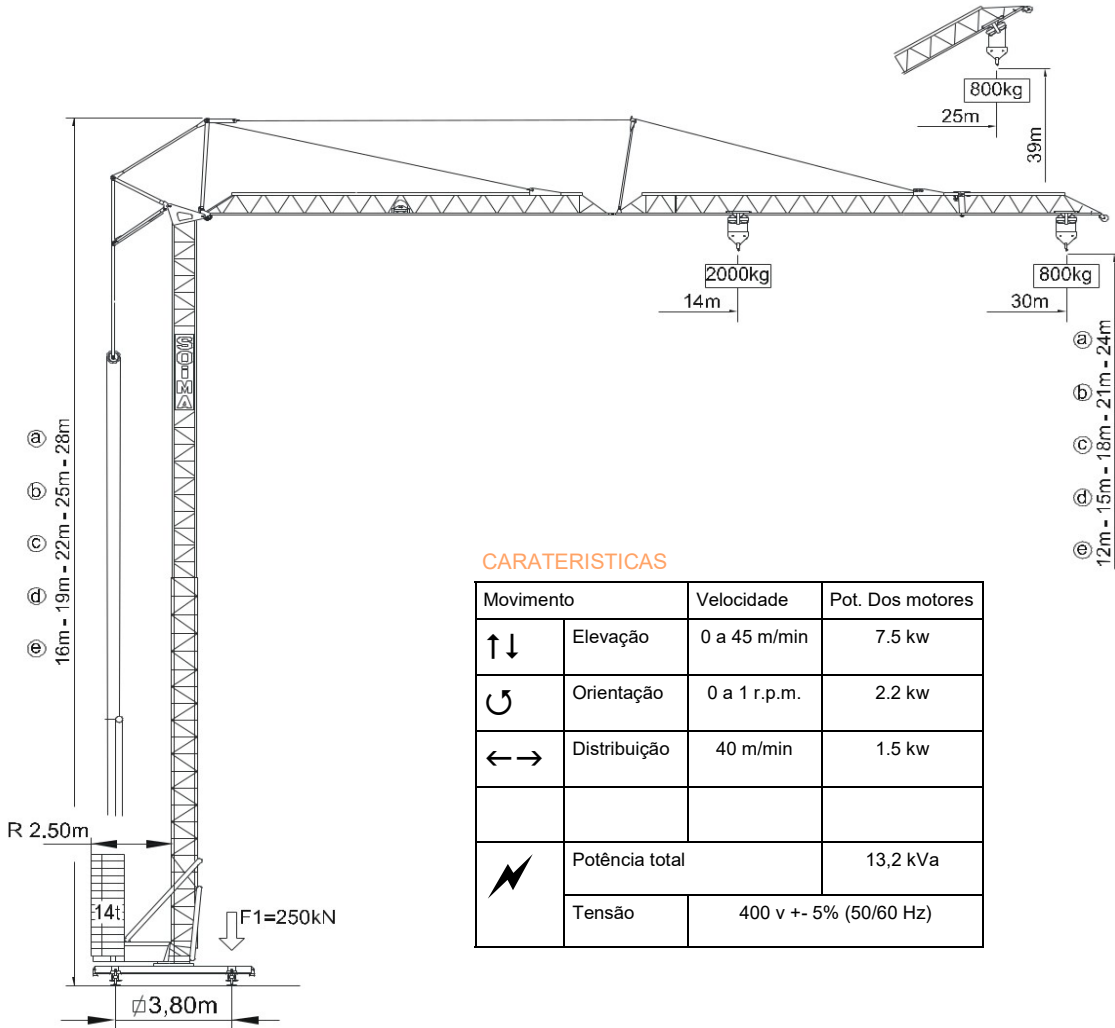
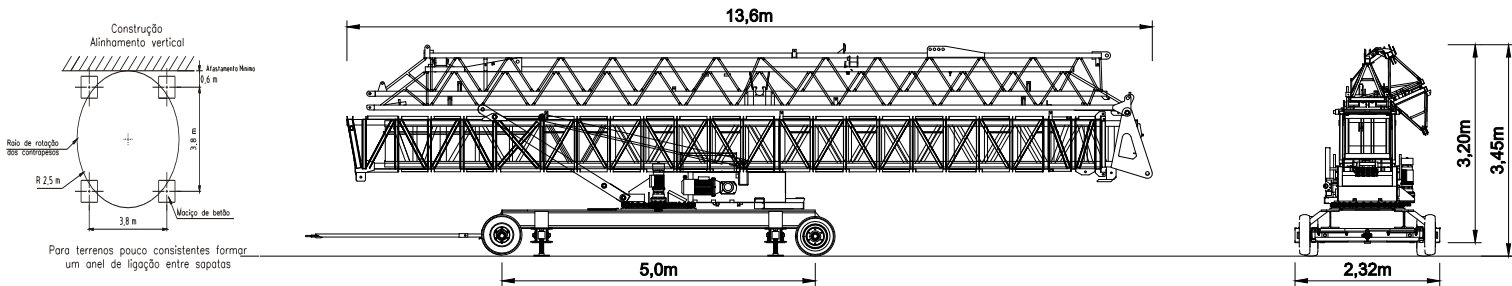


# SGA 24x30

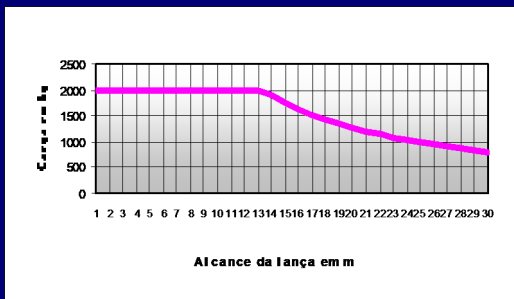


## CARACTERISTICAS

Movimento	Velocidade	Pot. Dos motores
↑ ↓	Elevação	0 a 45 m/min
↻	Orientação	0 a 1 r.p.m.
← →	Distribuição	40 m/min
⚡	Potência total	13,2 kVa
	Tensão	400 v +- 5% (50/60 Hz)



## DIAGRAMA DE CARGAS



## DIAGRAMA DE VELOCIDADE

